

Stamp Announcement 10-20: Scouting



© 2009 USPS

On July 27, 2010, in Fort A. P. Hill, Virginia, the Postal Service™ will issue a 44-cent, *Scouting* commemorative stamp in one design in a pressure-sensitive adhesive (PSA) pane of 20 stamps (Item 465400). The stamp, designed by Derry Noyes, Washington, DC, goes on sale nationwide July 27, 2010.

To create this original design, illustrator Craig Frazier, Mill Valley, California, depicted the images of two different scouts in clothing and accessories that are often part of the outdoor scouting experience — hats, packs, boots, and binoculars. At first glance, one sees the large silhouette of a scout peering through binoculars. Within this figure is another scout perched atop a mountain taking in the vista. “I wanted a level of discovery to be portrayed in the stamp itself,” Frazier recalls.

He continues, “The small figure and landscape indicate very hard, directional light coming from low on the horizon — either early morning or late afternoon. The sky has that pale blue to indigo transition that happens only at those two times of day.”

Issue:	<i>Scouting</i>
Item Number:	465400
Denomination & Type of Issue:	44-cent Commemorative
Format:	Pane of 20 (1 design)
Series:	N/A
Issue Date & City:	July 27, 2010, Fort A.P. Hill, Virginia 22427
Designer:	Craig Frazier, Mill Valley, CA
Art Director:	Derry Noyes, Washington, DC
Typographer:	Craig Frazier, Mill Valley, CA
Artist:	Craig Frazier, Mill Valley, CA
Engraver:	Trident
Modeler:	Avery Dennison, SPD
Manufacturing Process:	Gravure
Printer:	Avery Dennison (AVR)
Printed at:	Clinton, SC
Press Type:	Dia Nippon Kiko (DNK)
Stamps per Pane:	20
Print Quantity:	40 million stamps
Paper Type:	Prephosphored, Type I
Adhesive Type:	Pressure-sensitive
Processed at:	AVR, Clinton, SC
Colors:	Yellow, Magenta, Cyan, Black, PMS 299 (Blue), PMS 485 (Red)
Stamp Orientation:	Vertical
Image Area (w x h):	0.84 x 1.42 in./21.34 x 36.07 mm
Overall Size (w x h):	0.99 x 1.56 in./25.15 x 39.62 mm
Full Pane Size (w x h):	5.85 x 7.25 in./148.59 x 184.14 mm
Plate Size:	160 stamps per revolution
Plate Numbers:	“V” followed by six (6) single digits
Marginal Markings:	
Front:	Plate numbers in four corners of pane
Back:	© 2009 USPS • USPS logo • Barcode (465400) in two corners of pane • Price: “.44 x 20 = \$8.80” • Plate position diagram • Brief description about scouting on back of each stamp

**How to Order the First Day of Issue Postmark**

Customers have 60 days to obtain the first day of issue postmark by mail. They may purchase new stamps at their local Post Office™ facility, at The Postal Store® website at [www.usps.com/shop](http://www.usps.com/shop), or by calling 800-STAMP-24. They should affix the stamps to envelopes of their choice, address the envelopes (to themselves or others), and place them in a larger envelope addressed to:

Scouting Stamp  
 Postmaster  
 117 Milford Street  
 Bowling Green, VA 22427-9998

After applying the first day of issue postmark, the Postal Service will return the envelopes through the mail. There is no charge for the postmark. All orders must be postmarked by September 27, 2010.

## Guidelines for Finalizing Scouting Stamp Pictorial Postmark Art.

### Special Dedication Postmarks

Only the following pictorial postmark is permitted for the *Scouting* stamp. The word "Station" or the abbreviation "STA" is required somewhere in the design, because it will be a temporary station.



Finished Artwork



Unfinished Artwork

To finalize the *Scouting* stamp pictorial postmark art, insert the date, city, state, and ZIP™ Code of the physical location of your event adjacent to the stamp image. Overall dimensions of the pictorial postmark must not exceed 4 inches horizontally by 2 inches vertically. Collectors prefer the dimensions 3 1/2 inches by 1 inch.

### How to Order First Day Covers

Stamp Fulfillment Services also offers first day covers for new stamp issues and Postal Service stationery items postmarked with the official first day of issue cancellation. Each item has an individual catalog number and is offered in the quarterly *USA Philatelic Catalog*. Customers may request a free catalog by calling 800-STAMP-24 or writing to:

Information Fulfillment  
Dept. 6270  
U.S. Postal Service  
PO Box 219014  
Kansas City, MO 64121-9014

## Philatelic Products

There are four philatelic products available for this stamp issue:

- 465461\*, First Day Cover, \$0.82.
- 465465\*, Digital Color Postmark, \$1.50.
- 465491\*, Ceremony Program, \$6.95.
- 465499\*, Digital Color Postmark Keepsake, \$10.95.

Items with an asterisk (\*) will use the 128 barcode from Stamp Fulfillment Services. All other philatelic products will continue to use barcode series A, with the exception of the Yearbook and the Guide Book.

### Distribution: Item 465400, 44-cent Scouting PSA Pane of 20 Stamps

Stamp distribution offices (SDOs) and stamp distribution centers (SDCs) will receive approximately 25 percent of their standard automatic distribution quantity for a PSA sheet stamp. Distributions are rounded up to the nearest master carton size of 40,000 stamps.

### Initial Supply to Post Offices

SDOs/SDCs will make a subsequent automatic distribution to Post Offices of 25 percent of their standard automatic distribution quantity using PS Form 17, *Stamp Requisition/Stamp Return*. SDOs must not distribute this commemorative sheet to Post Offices before July 12, 2010.

### Additional Supply

Post Offices requiring additional quantities of Item 465400 must requisition them from their designated SDO/SDC using PS Form 17.

### Sales Policy

All Post Offices must acquire and maintain a supply of each new commemorative stamp as long as customer demand exists, until inventory is depleted, or until the stamp is officially withdrawn from sale. If supplies run low, Post Offices must reorder additional quantities using their normal ordering procedures

— Stamp Services,  
Government Relations and Public Policy, 6-17-10

## Pictorial Postmarks Announcement

As a community service, the Postal Service™ offers pictorial postmarks to commemorate local events celebrated in communities throughout the nation. A list of events for which pictorial postmarks are authorized appears below. The sponsor of the pictorial postmark appears in italics under the date. Also provided are illustrations of these postmarks.

People attending these local events may obtain the postmark in person at the temporary Post Office™ station established there. Those who cannot attend the event but who wish to obtain the postmark may submit a mail order

request. Pictorial postmarks are available only for the dates indicated, and *requests must be postmarked no later than 30 days following the requested pictorial postmark date.*

All requests must include a stamped envelope or postcard bearing at least the minimum First-Class Mail® postage. Items submitted for postmark may not include postage issued after the date of the requested postmark. Such items will be returned unserved.

Customers wishing to obtain a postmark should affix stamps to any envelope or postcard of their choice,

address the envelope or postcard to themselves or others, insert a card of postcard thickness in envelopes for sturdiness, and tuck in the flap. Place the envelope or postcard in a larger envelope and address it to: Pictorial Postmarks, followed by the Name of the Station, Address, City, State, ZIP+4® Code, as listed below.

Customers can also send stamped envelopes and postcards without addresses for postmark, as long as they supply a larger envelope with adequate postage and their return address. After applying the pictorial postmark, the Postal Service returns the items (with or without addresses) under addressed protective cover.

The following pictorial postmark has been extended for 60 days:



June 5, 2010  
 American Hiking Society  
 National Trails Day Station/  
 Appalachian Trail

Postmaster  
 113 Penobscot Ave.  
 Millinocket, ME 04462-9998

Postmaster  
 2517 Main St.  
 Rangeley, ME 04970-9998

Postmaster  
 165 Main St.  
 Gorham, NH 03581-9998

Postmaster  
 50 Main St.  
 Hanover, NH 03755-9998

Postmaster  
 120 Route 3N  
 Twin Mountain, NH 03595-9998

Postmaster  
 22 Central St.  
 Woodstock, VT 05091-9998

Postmaster  
 12 Sheppard Ave.  
 Delaware Water Gap, PA 18327-9998

Postmaster  
 113 Penobscot Ave.  
 Stroudsburg, PA 18360-9998

Postmaster  
 3 E. 1<sup>st</sup> St.  
 Boiling Springs, PA 17007-9998

Postmaster  
 110 Upper Bermudian Rd.  
 Gardners, PA 17324-9998

Postmaster  
 1010 Washington St.  
 Harpers Ferry, WV 25425-9998

Postmaster  
 671 Tsali Blvd.  
 Cherokee, NC 28719-9998

Postmaster  
 1216 East Pkwy.  
 Gatlinburg, TN 37738-9998

Postmaster  
 3235 Rena St.  
 Pigeon Forge, TN 37863-9998

The following pictorial postmark has been extended for 60 days:



June 5, 2010  
 American Hiking Society  
 National Trails Day Station/Continental Divide Trail

Postmaster  
 816 W. Santa Fe Ave.  
 Grants, NM 87020-9998

Postmaster  
 215 W. Riverside Dr.  
 Estes Park, CO 80517-9998

Postmaster  
 822 Canyon Village  
 Yellowstone National Park, WY 82190-9998

Postmaster  
 209 Grizzly Ave.  
 West Yellowstone, MT 59758-9998



June 26, 2010  
*Rudyard Centennial  
 Committee*  
 Centennial Station  
 Postmaster  
 PO Box 9998  
 Rudyard, MT 59540-9998

Norris Centennial Station  
 June 26, 2010  
 Norris, SD 57560



June 26, 2010  
*U.S. Postal Service*  
 Norris Centennial Station  
 Postmaster  
 27149 SD Hwy. 63  
 Norris, SD 57560-9998

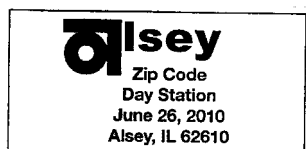


June 26, 2010  
*Chamber of Commerce*  
 Sky View Drive In Station  
 Postmaster  
 202 E. Kirkham St.  
 Litchfield, IL 62056-9998



**Callaway Q125 Sta.  
 Callaway, NE 68825  
 June 26, 2010**

June 26, 2010  
*Callaway 125th Committee*  
 Callaway Q125 Station  
 Postmaster  
 PO Box 9998  
 Callaway, NE 68825-9998



June 26, 2010  
*Village of Station*  
 Zip Code Day Station  
 Postmaster  
 101 Main St.  
 Aisey, IL 62610-9998



June 29–July 5, 2010  
*Fern Dell Historical  
 Association*  
 175th Birthday Station  
 OIC/Postmaster  
 11 E. Main St.  
 Newark, IL 60541-9998



June 26, 2010  
*Village of Milltown*  
 Milltown Station  
 Postmaster  
 PO Box 9998  
 Milltown, WI 54858-9998



147th Anniversary Battle of Gettysburg  
 June 30 1863  
 General Buford Station  
 Gettysburg PA 17325, June 30, 2010

June 30, 2010  
*NY Capital District Civil War  
 Roundtable*  
 General Buford Station  
 Postmaster  
 115 Buford Ave.  
 Gettysburg, PA 17325-9998

— *Stamp Services,  
 Government Relations and Public Policy, 6-17-10*

## How to Order the First Day of Issue Digital Color or Traditional Postmarks

Customers have 60 days to obtain the first day of issue postmarks by mail. They may purchase new stamps at their local Post Office™, by telephone at 800-STAMP-24, or at The Postal Store® website at [www.usps.com/shop](http://www.usps.com/shop).

### Traditional Postmarks

Customers should affix the stamps to envelopes of their choice, address them to themselves or others, or provide a self-addressed return envelope with sufficient postage large enough to accommodate the canceled item. Mail the request to the corresponding city of issuance. There is no charge for the first 50 postmarks. There is a 5-cent charge for each additional postmark over 50. Customers should submit a check, money order, or credit card for payment. After applying the first day of issue postmark, the Postal Service™ will return the envelopes to the customer by U.S. Mail.

All postmark requests should go to the first day of issue city. The first day of issue city Post Office will then forward

in bulk all postmark requests to Cancellation Services, Stamp Fulfillment Services, PO Box 449992, Kansas City, MO 64144-9992 by respective Post Offices.

### Digital Color Postmarks

Only select stamp issues offer a digital color postmark. Customers may submit #6 or #10 envelopes constructed of paper rated as "laser safe." The Postal Service recommends envelopes of 80-pound Accent Opaque, acid-free, 9/16" side seams with no glue on the flap. The maximum size of all digital color postmarks is 2" high x 4" long. Allow sufficient space on the envelope to accommodate the postmark. Do not use self-adhesive labels for addresses on the envelope. Two test envelopes must be included. There is a minimum of 10 envelopes at 50 cents per postmark required at the time of servicing. Customers should submit a check, money order, or credit card for payment.

The Postal Service reserves the right to not accept hand-painted and other cachet envelopes that are not

compatible with our digital color postmark equipment. The Postal Service also reserves the right to substitute traditional black rubber postmarks if use of nonspecified envelopes results in poor image quality or damage to equipment.

Customers should affix the stamps to the envelopes and address them to themselves or others for return through the mail. Or, they may include an additional self-addressed return envelope, large enough to accommodate their can-

celed items, with sufficient postage affixed for return of their postmarked items. Mail the request for a first day of issue digital color postmark to the corresponding city of issuance. Post Offices will then forward all customer requests for digital color postmarks to Cancellation Services, Stamp Fulfillment Services, PO Box 449992, Kansas City, MO 64144-9992.

After applying the first day of issue postmark, the Postal Service will return the envelopes to the customer by U.S. Mail.



**Black and White Pictorial**

**Love: Pansies in a Basket Stamp**

Postmaster  
300 W. Pershing Rd.  
Kansas City, MO 64108-9998

June 22, 2010

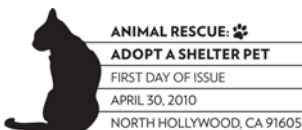


**Digital Color Pictorial**

**Love: Pansies in a Basket Stamp**

Postmaster  
300 W. Pershing Rd.  
Kansas City, MO 64108-9998

June 22, 2010



**Black and White Pictorial**

**Animal Rescue: Adopt a Shelter Pet Stamp**

Postmaster  
7035 Laurel Canyon Blvd.  
Hollywood, CA 91605-9998

June 30, 2010

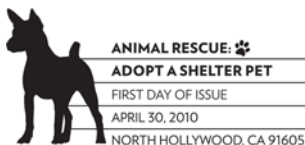


**Digital Color Pictorial**

**Animal Rescue: Adopt a Shelter Pet Stamp**

Postmaster  
7035 Laurel Canyon Blvd.  
Hollywood, CA 91605-9998

June 30, 2010



**Black and White Pictorial**

**Animal Rescue: Adopt a Shelter Pet Stamp**

Postmaster  
7035 Laurel Canyon Blvd.  
Hollywood, CA 91605-9998

June 30, 2010



**Digital Color Pictorial**

**Animal Rescue: Adopt a Shelter Pet Stamp**

Postmaster  
7035 Laurel Canyon Blvd.  
Hollywood, CA 91605-9998

June 30, 2010



**Black and White Pictorial**

**Katharine Hepburn Stamp**

Postmaster  
36 Main Street  
Old Saybrook, CT 06475-9998

July 12, 2010



Digital Color Pictorial

**Katharine Hepburn Stamp**

Postmaster  
36 Main Street  
Old Saybrook, CT 06475-9998

July 12, 2010



Black and White Pictorial

**Kate Smith Stamp**

Special Cancellations  
PO Box 92282  
Washington, DC 20090-2282

July 27, 2010



Digital Color Pictorial

**Kate Smith Stamp**

Special Cancellations  
PO Box 92282  
Washington, DC 20090-2282

July 27, 2010

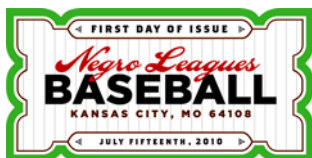


Black and White Pictorial

**Negro Leagues Baseball Stamp**

Postmaster  
300 W. Pershing Road  
Kansas City, MO 64108-9998

September 15, 2010



Digital Color Pictorial

**Negro Leagues Baseball Stamp**

Postmaster  
300 W. Pershing Road  
Kansas City, MO 64108-9998

September 15, 2010

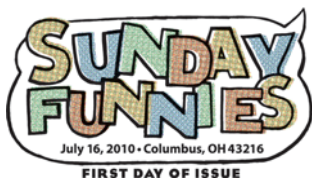


Black and White Pictorial

**Sunday Funnies Stamp**

850 Twin Rivers Drive, Retail, Rm. 416  
Columbus, OH 43216-9653

September 17, 2010

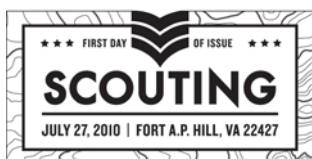


Digital Color Pictorial

**Sunday Funnies Stamp**

850 Twin Rivers Drive, Retail, Rm. 416  
Columbus, OH 43216-9653

September 17, 2010



Black and White Pictorial

**Scouting Stamp**

Postmaster  
117 Milford Street  
Bowling Green, VA 22427-9998

September 27, 2010



Digital Color Pictorial

**Scouting Stamp**  
 Postmaster  
 117 Milford Street  
 Bowling Green, VA 22427-9998

September 27, 2010

– Stamp Services, Government Relations and Public Policy, 6-17-10

## Updated Announcement 10-D: 2010 Stamps and Postal Stationery

“2010 Stamps and Postal Stationery” (Announcement 10-D, June 2010), which appears on pages [91–93](#), replaces the quarterly announcement of the same name, previously printed and sent to customers on request through Stamp Fulfillment Services in Kansas City. The announcement is a listing of stamps and postal stationery items scheduled for issuance during calendar year 2010. Postmasters may wish to post this schedule on their Post Office™ bulletin boards.

Customers may also access the *Postal Bulletin* through the Postal Service™ website at [www.usps.com](http://www.usps.com); click *About USPS & News*, then *Forms & Publications*, then *Postal Bulletin*.

This announcement will be updated every 2 to 3 months, as changes warrant.

### How to Order First Day of Issue Postmarks and Covers

Customers may purchase new stamps or postal stationery items at their Post Office, from the *USA Philatelic Catalog*, by calling 800-STAMP-24, or online at [www.usps.com](http://www.usps.com) by clicking *Buy Stamps & Shop*. Then they should prepare their own covers by affixing new stamps to the upper-right corner of envelopes or postcards of their

choice, and address those envelopes, postcards, or postal stationery items to themselves or others. (Postage must equal the current First-Class Mail® rate.) For sturdiness, include a card of postcard thickness in each cover (envelopes only) submitted, and tuck in the flap. Place the cover in a larger envelope addressed to:

Name of Issue  
 Postmaster  
 City, State ZIP Code (followed by -9998)

Covers submitted for first day of issue postmarks may include additional uncanceled stamps only if the uncanceled stamps were issued before the first day of issue of the new stamps or postal stationery items. All orders must be postmarked on or before the deadline indicated in the “2010 Stamps and Postal Stationery” announcement on pages [91–93](#).

Information Fulfillment  
 Dept. 6270  
 U.S. Postal Service  
 PO Box 219014  
 Kansas City, MO 64121-9014

– Stamp Services,  
 Government Relations and Public Policy, 6-17-10

## 2010 Stamps and Postal Stationery

**This schedule is subject to change.**

**Updated Announcement 10-D (June 2010)**

This is a periodic announcement of new stamps and postal stationery items being issued during the calendar year. For additional information on stamps and stamp products, visit The Postal Store® website at [www.usps.com/shop](http://www.usps.com/shop).

ISSUE	NATIONWIDE FIRST DAY OF ISSUE	FIRST DAY CITY/STATE	FORMAT	DEADLINE
\$4.90 Mackinac Bridge, MI (Priority Mail)	Jan 4	Kansas City, MO 64108	Pre-stamped Priority Mail Envelope	Mar 5
44¢ Seabiscuit (C2C)	Jan 4	Kansas City, MO 64108	Stamped Envelope #10 Stamped Envelope #10W Stamped Envelope #9 Stamped Envelope #9W Stamped Envelope #6 3/4 Stamped Envelope #6 3/4W	Mar 5